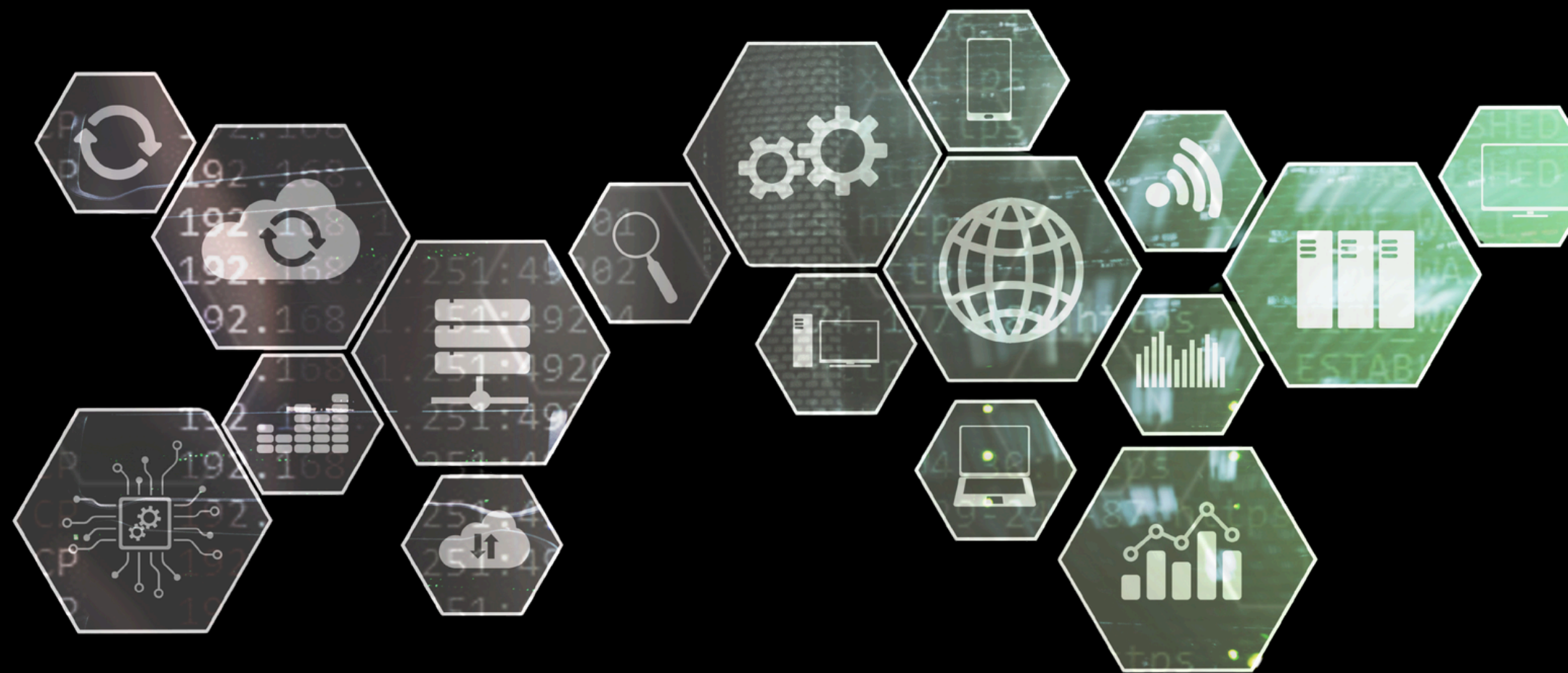


9 Operational Failures Companies Experience

without a competent operating system



 **FLEETPRO**



ONE SOURCE OF TRUTH DOESN'T EXIST — AND EVERYONE KNOWS IT.

Fragmented Data

When fleet operations rely on disconnected systems, spreadsheets, and siloed databases, the result is a patchwork of conflicting reports that no one fully trusts. Maintenance logs live in one place, fuel data in another, and asset history somewhere else entirely. Without a single source of truth, teams waste hours reconciling numbers instead of acting on them — and critical decisions get made on incomplete or outdated information.



YOUR TEAM IS ALWAYS PUTTING OUT FIRES, NEVER PREVENTING THEM.

Reactive Operations

Without visibility into asset health and maintenance schedules, teams are perpetually in firefighting mode. Instead of following a proactive maintenance plan, technicians respond to whatever breaks loudest that day. This reactive cycle drives up repair costs, strains staff, and creates a culture where urgency always wins over strategy — leaving no bandwidth for improvement or planning.



THE BREAKDOWN NOBODY SAW COMING — BUT EVERYONE FELT.

Unplanned Downtime

Missed or delayed maintenance doesn't just shorten asset life — it stops operations cold. When a critical piece of equipment fails unexpectedly, the downstream impact ripples across scheduling, staffing, and customer commitments. Rushed emergency repairs are consistently more expensive, less thorough, and more likely to cause repeat failures than planned preventive work.



SPENDING TOO MUCH, TOO SOON, OR FAR TOO LATE.

Poor Capital Decisions

Without accurate lifecycle data, organizations are essentially guessing when to repair, replace, or retire assets. Some equipment gets replaced prematurely while other assets are run far past their useful life, accumulating hidden costs along the way. The absence of data-driven capital planning leads to budget overruns, surprise expenditures, and a fleet that ages unevenly and unpredictably.



THE AUDIT YOU'RE NOT READY FOR IS CLOSER THAN YOU THINK.

Compliance Risk

Regulatory audits don't wait for organizations to get organized. When inspection records, certifications, and maintenance documentation are scattered across filing cabinets, inboxes, and outdated spreadsheets, the risk of audit failure climbs significantly. Beyond fines and penalties, compliance gaps can expose organizations to liability, operational shutdowns, and reputational damage that far outweighs the cost of proper recordkeeping.



WHEN LEADERS CAN'T TRUST THE DATA, NOTHING MOVES FAST ENOUGH.

Decision Fatigue

When executives can't trust the data in front of them, every decision becomes an exercise in second-guessing. Leaders spend valuable time verifying reports, cross-referencing sources, and seeking reassurance instead of acting with confidence. Over time, this erosion of data trust slows decision-making at every level and creates an organizational culture that is hesitant, misaligned, and slow to respond to change.



YOUR BEST PEOPLE ARE DOING THEIR WORST WORK.

Labor Inefficiency

Skilled technicians are expensive — and every minute they spend logging into multiple platforms, hunting for asset history, or manually entering duplicate data is a minute not spent on productive work. System complexity and poor integration quietly drain labor hours across the entire operation. Multiply that loss across a team and a year, and the cost of inefficient tooling becomes impossible to ignore.



WHAT GOT YOU HERE WON'T GET YOU WHERE YOU'RE GOING.

Scalability Failure

Processes that barely hold together at current scale will break under the weight of growth. Manual workarounds, informal systems, and tribal knowledge may keep a small operation running, but they cannot support a growing fleet, an expanding team, or increasing regulatory demands. Without a scalable operating foundation, growth becomes a liability rather than an opportunity.



A SYSTEM NO ONE USES IS A SYSTEM THAT DOESN'T EXIST.

Low User Adoption

Even the most powerful system delivers zero value if the people who need it won't use it. Overly complex interfaces, poor training, and tools that feel disconnected from real workflows drive teams back to spreadsheets and workarounds. Low adoption doesn't just waste the investment — it creates a false sense that the data is being captured when it isn't, making every report and dashboard fundamentally unreliable.



Schedule Your Free
Demo Today.

[SCHEDULE NOW](#)